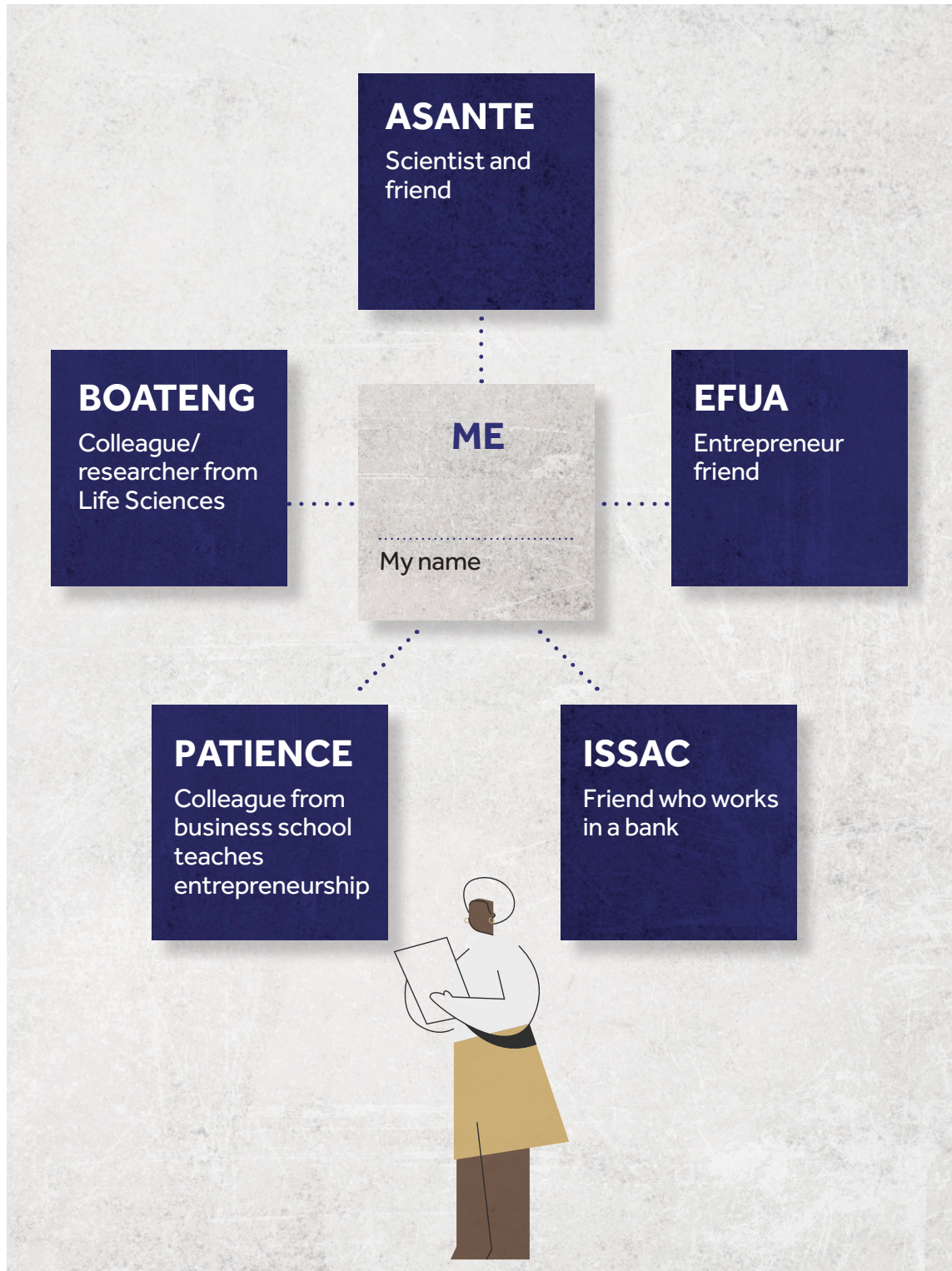


---

# Example Network Map

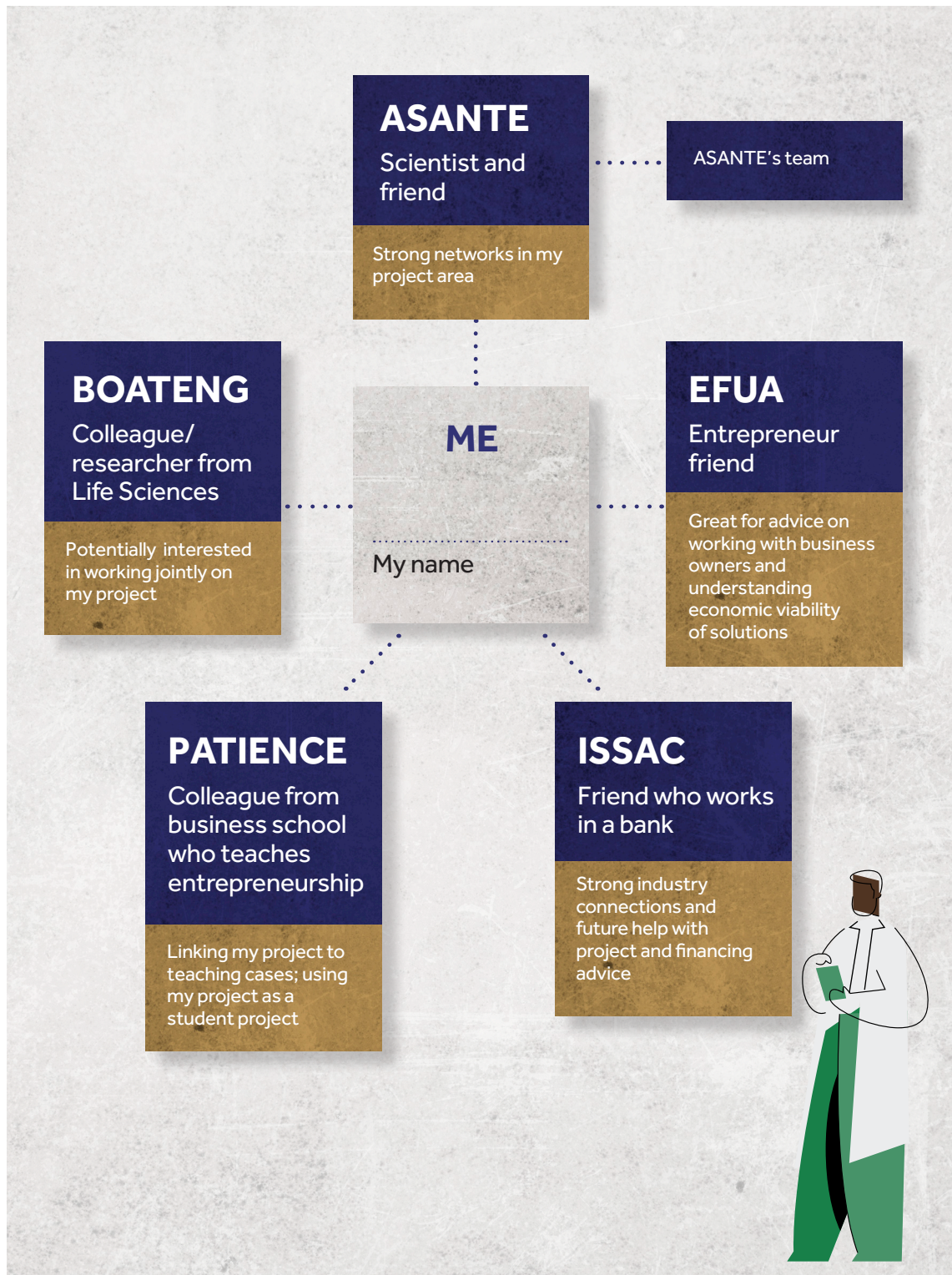
People I know who can help with my project





# Example Network Map with Resources

People I know who can help with my project

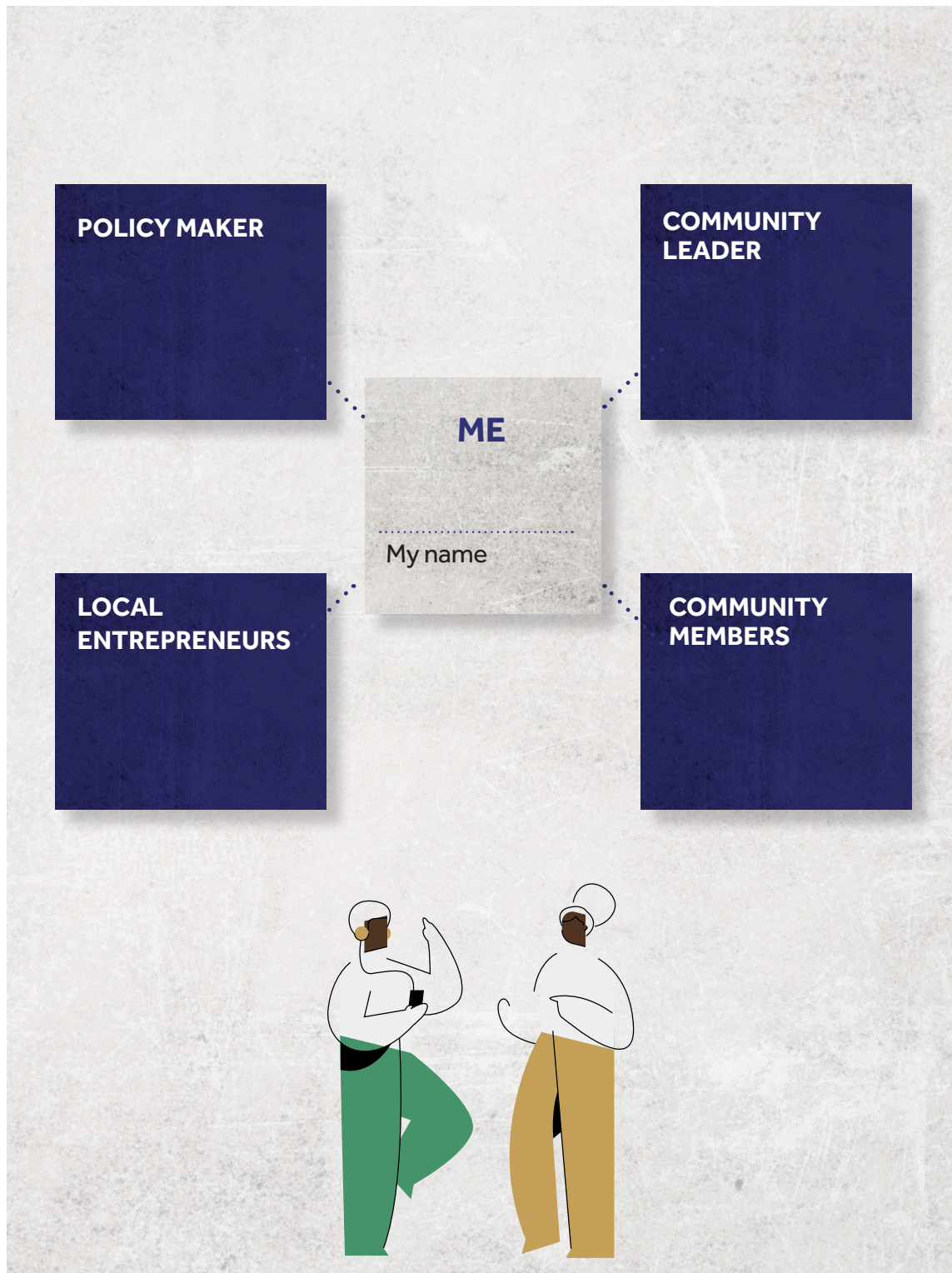




---

# Example Fantasy Network Map

People who I would like to have in my network





---

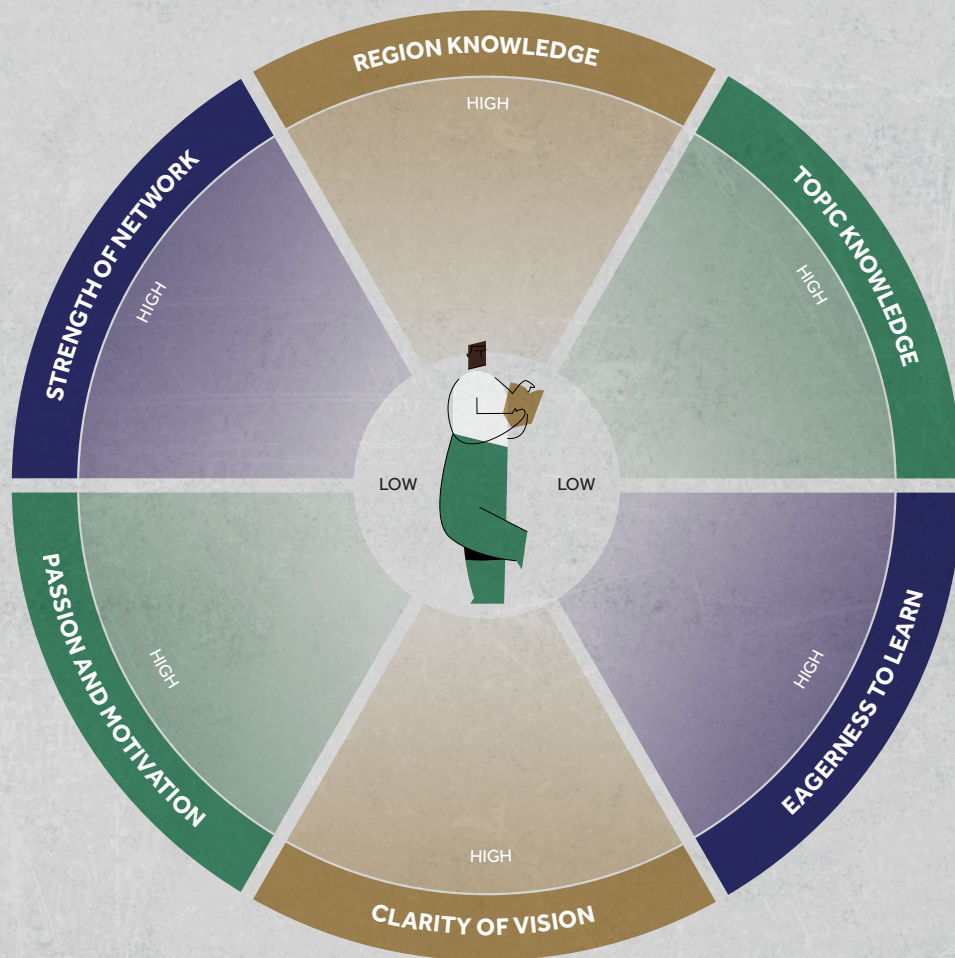
# Example Fantasy Network Map with Resources

People who I would like to have in my network





# SETS Power Wheel



Within each of the six segments on the SETS Power Wheel note how strong your skills and knowledge are (grading them from low to high):

**Region knowledge:** How knowledgeable are you of the region in which you will carry out your project? Especially your knowledge of the region's political, social, economic, cultural contexts applicable to your project.

**Topic knowledge:** How strong are your skills and expertise within the area upon which your project is based?

**Eagerness to learn:** How eager are you to learn from the process of using entrepreneurial thinking to create impact from research?

**Clarity of vision:** How clear is the vision for your project and what you want to achieve?

**Passion and motivation:** How passionate and motivated are you to make a positive difference from your research?

**Strength of network:** How strong are your networks and how well might people in your networks be able to support your project?